

WHIMSICAL PROJECT
LLP

PIVORA DOORS

2025 PRODUCT CATALOG



ABOUT PIVORA DOORS

Pivora Doors, a division of Whimsical Project LLP, redefines the way we experience space through precision, innovation, and artistry. Our collection is born from a desire to merge functionality with design — offering doors that are not just entryways, but architectural statements.

Crafted with meticulous attention to detail and the finest materials, every Pivora door embodies sophistication, durability, and timeless appeal. From sleek modern pivots to grand customized entrances, we create pieces that transform interiors and elevate everyday living.

OUR VISION

At Pivora, our vision is to create doors that embody elegance, function, and imagination. We strive to transform ordinary openings into extraordinary design statements — blending art, architecture, and engineering seamlessly.

Our goal is to redefine the modern door experience through precision detailing, bespoke craftsmanship, and timeless style.

WHIMSICAL PROJECT
LLP

WHY CHOOSE PIVORA

- Innovative design backed by architectural expertise.
- Seamless blend of functionality and artistry.
- Bespoke manufacturing for one-of-a-kind results.
- Precision-engineered pivot systems.
- Trusted craftsmanship from Whimsical Project LLP — specialists in architecture, interior design, and construction.

2025 PRODUCT CATALOG



WHIMSICAL PROJECT
LLP

PRODUCT HIGHLIGHTS

- **Impressive Dimensions:** Available in grand sizes — up to 3.6 meters in height and 2.4 meters in width — offering a bold and luxurious statement.
- **Pivot Perfection:** Choose between center pivot and side pivot mechanisms, engineered for smooth, effortless movement.
- **Custom-Made Design:** Every Pivora door is fully customizable — from size, finish, and material to detailing — tailored to meet your architectural vision.
- **Architectural Integration:** Our design team collaborates closely with architects and designers to craft doors that perfectly complement the overall design language of any project.
- **Interior Door Expertise:** We also specialize in concealed-hinge interior doors and flush-finish designs, delivering a clean, seamless aesthetic.
- **Premium Finishes:** Available in a wide range of finishes including wood veneers, laminates, metals, and custom coatings to match any design palette.

2025 PRODUCT CATALOG



TABLE OF CONTENT

PIVORT Zenith Linea

02

This luxury door showcases a skin crafted from ACP with wood and aluminum finishes, offering a rich, immersive texture that feels both sophisticated and modern

PIVORA PIDOOR

04

This door features a smart lock system and a concealed handle for modern convenience, engineered to be strong and durable, with a dark wood texture and a flushed, seamless finish for a sophisticated appearance

Pivora Dual-Tone Designer Door

06

The Pivora Dual-Tone Designer Door is the perfect blend of modern elegance and bold design, featuring a striking horizontal pattern and a sophisticated dual-color finish to elevate any entrance with luxury and style.

Sleekline Pivot Door

9

This contemporary pivot door features a concealed, ambient LED light strip and a minimalist groove pattern accented with a sleek black steel rod, seamlessly integrated with a hidden handle—delivering an elegant entrance experience with cutting-edge style and security

LUX DESIGN

12

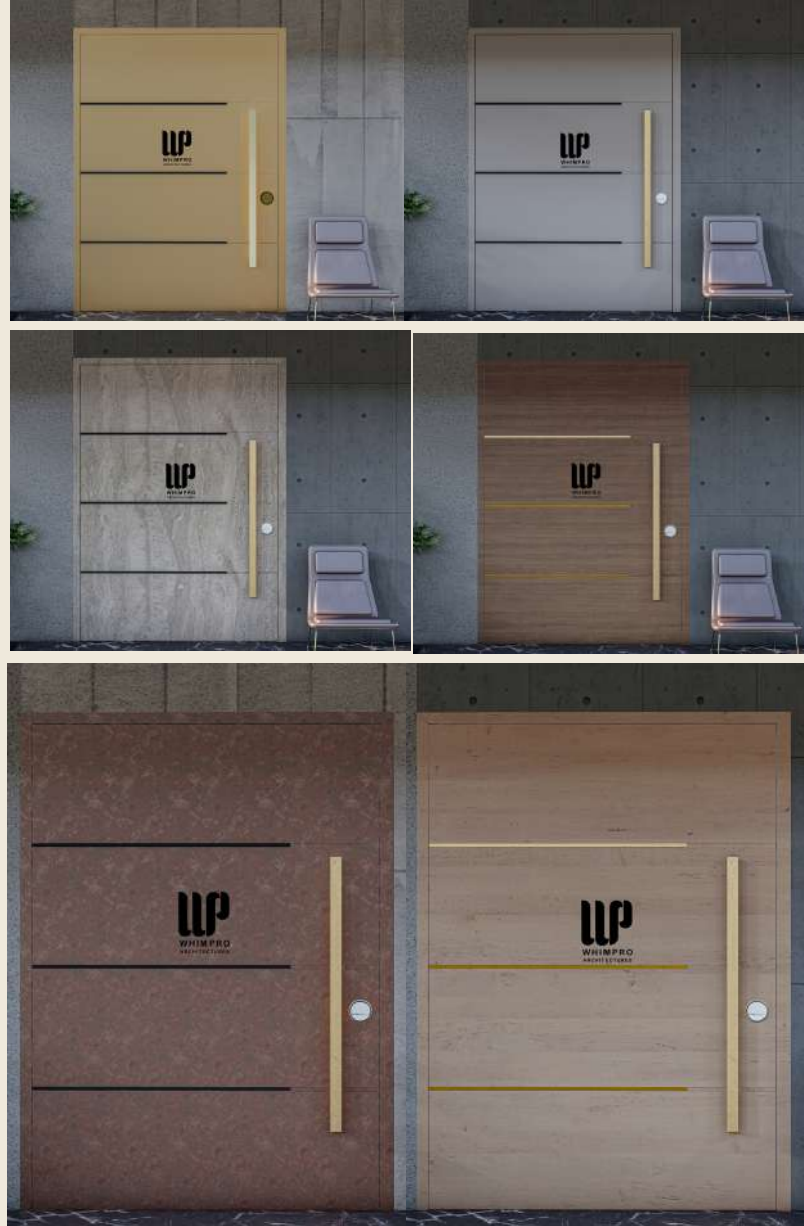
Pivora Granite Gold Pivot Door: Elegant gray granite texture meets golden accents for a refined, modern entrance.



ZENITH LINEA

This contemporary pivot door features a concealed, ambient LED light strip and a minimalist groove pattern accented with a sleek black steel rod, seamlessly integrated with a hidden handle—delivering an elegant entrance experience with cutting-edge style and security

PIVORA ZENITH LINEA



Pivora Zenith Linea



This luxury door showcases a skin crafted from ACP with wood and aluminum finishes, offering a rich, immersive texture that feels both sophisticated and modern. Its flushed design and heavy-duty pivot system ensure seamless elegance while supporting exceptional durability and strength. The blend of materials delivers a premium look and robust performance, ideal for those seeking an exclusive architectural statement.



PIDOOR

This contemporary pivot door features a concealed, ambient LED light strip and a minimalist groove pattern accented with a sleek black steel rod, seamlessly integrated with a hidden handle—delivering an elegant entrance experience with cutting-edge style and security

PIVORA PIDOOR

Dark wood skin

This door features a smart lock system and a concealed handle for modern convenience, engineered to be strong and durable, with a dark wood texture and a flushed, seamless finish for a sophisticated appearance



Gray Skin

This door features a smart lock system and a concealed handle for modern convenience, engineered to be strong and durable, with a gray wood texture and a flushed, seamless finish for a sophisticated appearance



Antic wood skin

This door features a smart lock system and a concealed handle for modern convenience, engineered to be strong and durable, with a wood texture and a flushed, seamless finish for a sophisticated appearance



NEW DESIGN

Experience a new level of sophistication with this 160x300 cm door, available in distinct modern styles including minimalist matte, bold horizontal profiling, and elegant dual-tone finishes—each crafted to deliver a luxury, flushed pivot system design for heavy-duty performance and dramatic entrance appeal.



PIVORA DUAL-TONE DESIGNER DOOR

The Pivora Dual-Tone Designer Door is the perfect blend of modern elegance and bold design, featuring a striking horizontal pattern and a sophisticated dual-color finish to elevate any entrance with luxury and style.

PIVORA DUAL-TONE DESIGNER DOOR-WITH GLASS

Dimensions:

- Door: 240 x 300 cm
- Doorway/Area: 300 x 300 cm

Design & Aesthetics:

- Minimalist, contemporary design with seamless wood grain panels.
- Signature black horizontal accent integrates cutting-edge pivot technology.
- Flush fit, full-height glass sidelight for natural illumination and expansive views.

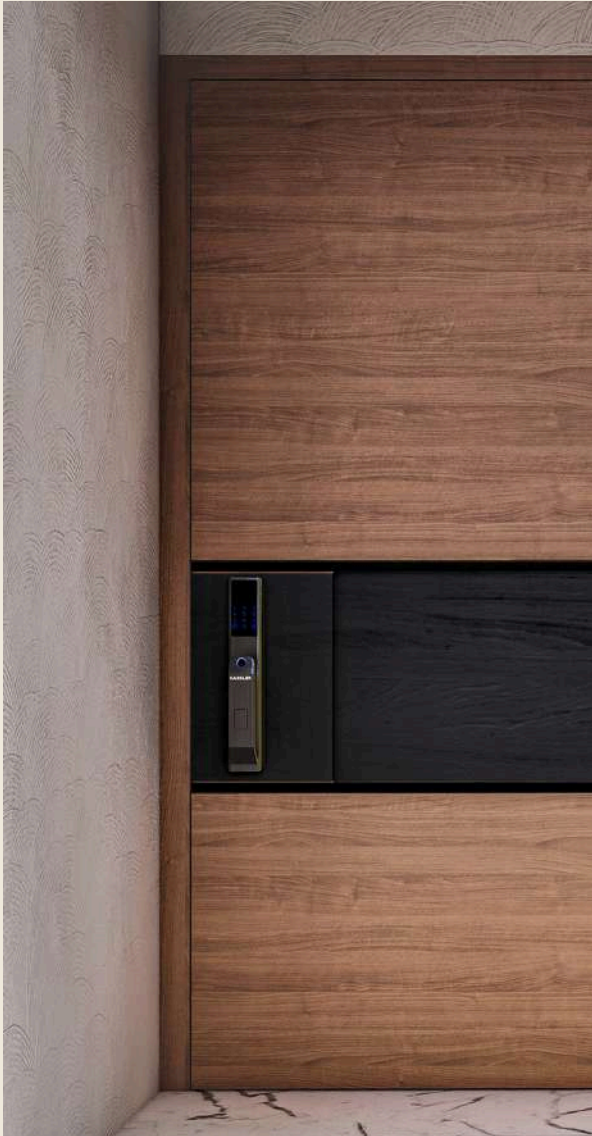
Materials & Finish:

- Premium selection: Combination of wood veneer and advanced ACP (Aluminum Composite Panel) for superior durability.
- Reinforced layers for acoustic dampening and enhanced fire resistance.
- Custom finish options: Choose from warm wood tones or statement color palettes to match your architecture.

Performance Features:

- Precision-engineered side pivot system for effortless, grand openings.
- Digital security lock and flush hardware for a refined, modern appearance.
- Excellent weather and corrosion resistance for long-lasting beauty and reliability.
- Superior insulation for comfort and energy efficiency.

PIVORA DUAL-TONE DESIGNER DOOR



Pivora Dual-Tone Designer Door



The Pivora main entrance door redefines luxury with its bold 240x300 cm presence, elegant wood accents, and seamless pivot design, complemented by a full-height glass sidelight to brighten every space.

PIVORA DUAL-TONE DESIGNER DOOR

Pivora Dual-Tone Designer Door

The Pivora main entrance door redefines luxury with its bold 240x300 cm presence, elegant wood accents, and seamless pivot design, complemented by a full-height glass sidelight to brighten every space.

SLEEKLINE PIVOT DOOR

This contemporary pivot door features a concealed, ambient LED light strip and a minimalist groove pattern accented with a sleek black steel rod, seamlessly integrated with a hidden handle—delivering an elegant entrance experience with cutting-edge style and security



SLEEKLINE PIVOT DOOR

SLEEKLINE PIVOT DOOR



Pivora Dual-Tone Designer Door

The Pivora main entrance door redefines luxury with its bold 240x300 cm presence, elegant wood accents, and seamless pivot design, complemented by a full-height glass sidelight to brighten every space.

NEW DESIGN

Experience a new level of sophistication with this 160x300 cm door, available in distinct modern styles including minimalist matte, bold horizontal profiling, and elegant dual-tone finishes—each crafted to deliver a luxury, flushed pivot system design for heavy-duty performance and dramatic entrance appeal.

PIDOOOR PIVOT DOOR

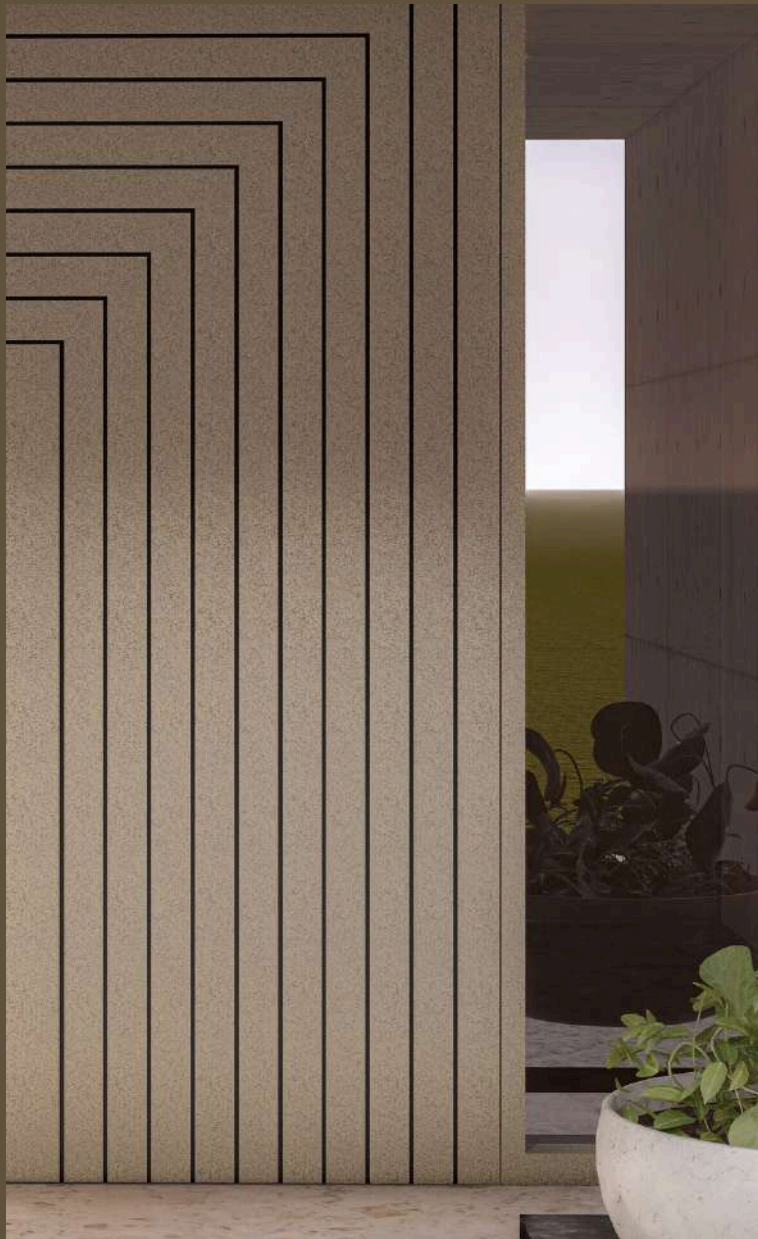
Pivora Granite Gold Pivot Door: Elegant gray granite texture meets golden accents for a refined, modern entrance.



LUX- DESIGN



LUX- DESIGN



LUX DESIGN



This luxury door showcases a skin crafted from ACP with wood and aluminum finishes, offering a rich, immersive texture that feels both sophisticated and modern. Its flushed design and heavy-duty pivot system ensure seamless elegance while supporting exceptional durability and strength. The blend of materials delivers a premium look and robust performance, ideal for those seeking an exclusive architectural statement.



LUX- DESIGN



LUX DESIGN



This luxury door showcases a skin crafted from ACP with wood and aluminum finishes, offering a rich, immersive texture that feels both sophisticated and modern. Its flushed design and heavy-duty pivot system ensure seamless elegance while supporting exceptional durability and strength. The blend of materials delivers a premium look and robust performance, ideal for those seeking an exclusive architectural statement.

BEST DESIGNS



LUX DESIGN

The Pivora main entrance door redefines luxury with its bold 240x300 cm presence, elegant wood accents, and seamless pivot design, complemented by a full-height glass sidelight to brighten every space.



Sleekline Pivot Door

This contemporary pivot door features a concealed, ambient LED light strip and a minimalist groove pattern accented with a sleek black steel rod, seamlessly integrated with a hidden handle—delivering an elegant entrance experience with cutting-edge style and security



Pivora Dual-Tone

The Pivora main entrance door redefines luxury with its bold 240x300 cm presence, elegant wood accents, and seamless pivot design, complemented by a full-height glass sidelight to brighten every space.

WHIMPRO

PIVORA CATALOG

2 0 2 5